

MONTHLY MEMBERSHIP PROGRESS REPORT

District 325B2

Results as of: 5/31/2020

GMT:

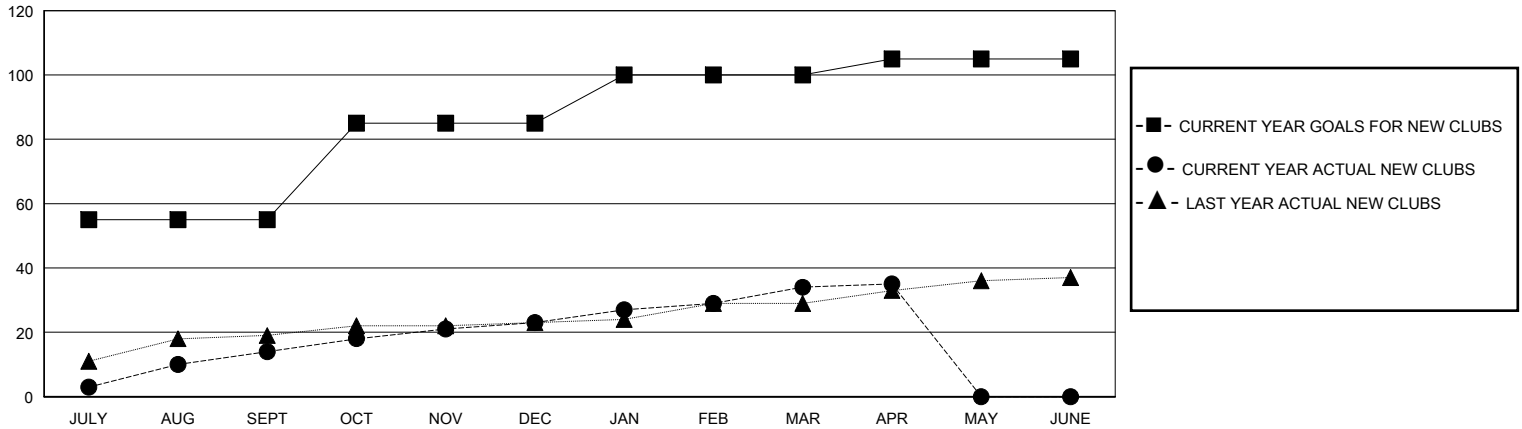
LOCATION NEPAL

GMT CA

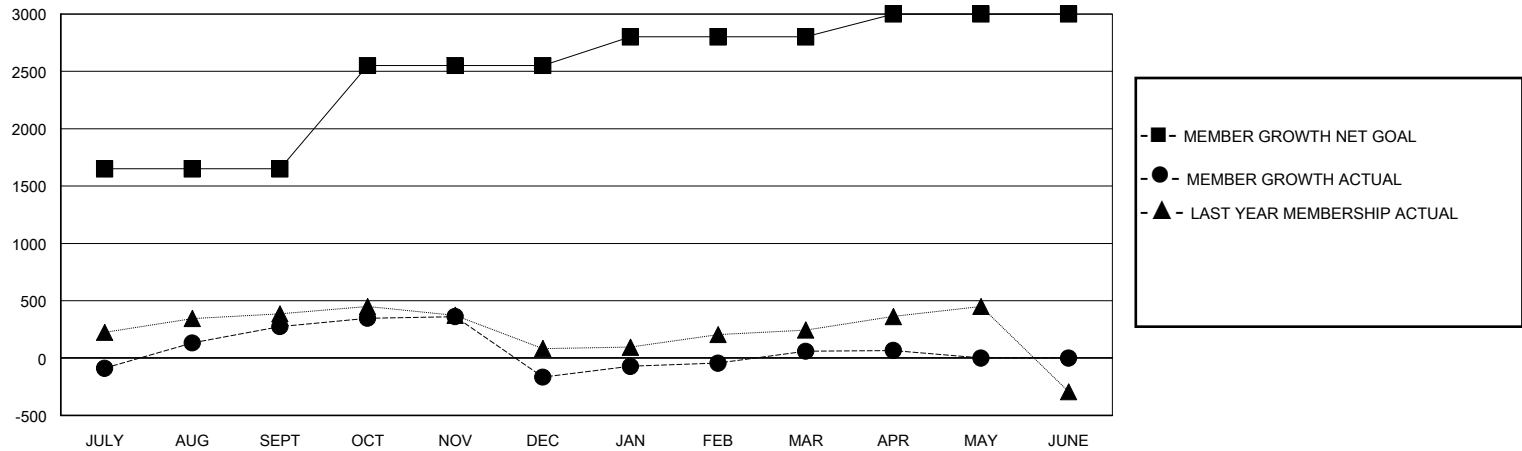
| Clubs | | | |
|-----------------------|---------------|-----------|---------------|
| RESULTS FOR 2019-2020 | | | |
| QUARTER | NEW CLUB GOAL | NEW CLUBS | DROPPED CLUBS |
| JULY/AUG/SEPT | 55 | 14 | 3 |
| OCT/NOV/DEC | 30 | 9 | 19 |
| JAN/FEB/MAR | 15 | 11 | 2 |
| APR/MAY/JUNE | 5 | 1 | 0 |

| Members | | | |
|-----------------------|------------------------|----------------------|--|
| RESULTS FOR 2019-2020 | | | |
| QUARTER | MEMBER GROWTH NET GOAL | MEMBER GROWTH ACTUAL | DROPPED MEMBERS ACTUAL (including transfers) |
| JULY/AUG/SEPT | 1650 | 540 | 257 |
| OCT/NOV/DEC | 900 | 307 | 741 |
| JAN/FEB/MAR | 250 | 370 | 136 |
| APR/MAY/JUNE | 200 | 74 | 66 |

GOALS AND ACTUAL NEW CLUBS CUMULATIVE



GOALS AND ACTUAL MEMBERS CUMULATIVE



DROPPED CLUBS: 24

172 CLUBS OF 404 ADDED 1 OR MORE NEW MEMBERS

GENDER DISTRIBUTION

MALE 6,573 (73.11%)
FEMALE 2,417 (26.89%)

DROPPED MEMBERS

| | |
|----------------|--------------|
| DECEASED | 2 |
| CLUB CANCELLED | 364 |
| OTHER | 834 |
| TOTAL | 1,200 |

[CLICK HERE FOR CUMULATIVE MEMBERSHIP DATA](#)

| | |
|---------------------------------|-------|
| TOTAL FAMILY UNIT MEMBERS | 5,245 |
| FAMILY MEMBERS PAYING HALF DUES | 3,174 |